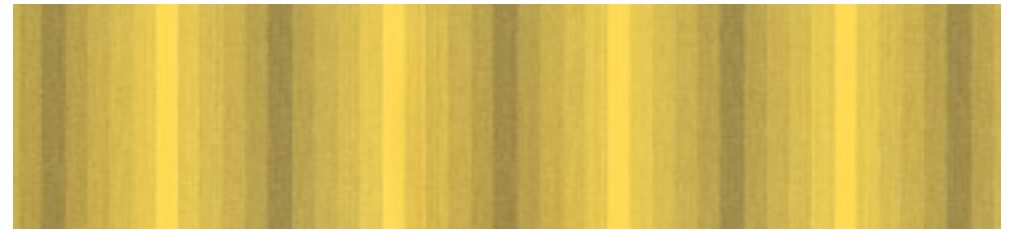


50 / 4 / *me*



31480 sunvas

| III 120 cm | \* |



30101 sunvas

| III 30 cm |



31401 sunvas

| III 30 cm |



31461 sunvas

| III 30 cm |



36917 sunsilk

| 1:1 |



31462 sunvas

| III 30 cm |



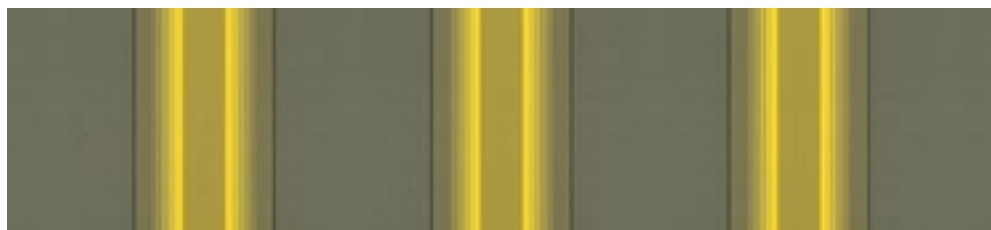
36995 sunsilk

| III 20 cm |



31402 sunvas

| III 30 cm |



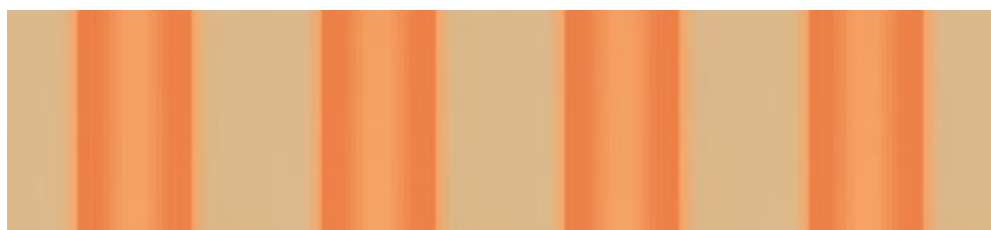
36910 sunsilk

| III 40 cm |



30102 sunvas

| III 30 cm |



36912 sunsilk

| III 30 cm |



36903 sunsilk

| III 120 cm | \* |

| \* | Only for folding-arm awnings/markilux pergola; a symmetrical pattern repeat cannot be guaranteed

50 / 4 / *me*



30103 sunvas

| III 30 cm |



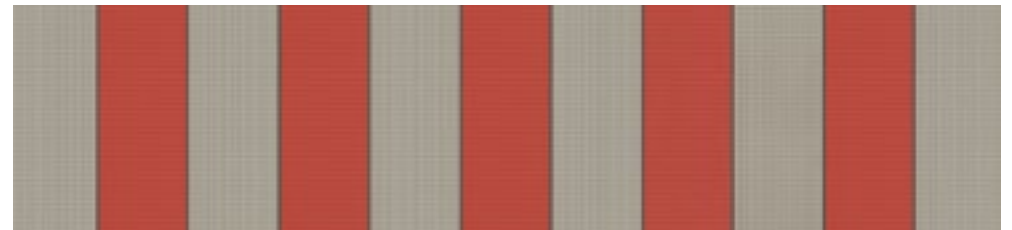
31483 sunvas

| 1:1 | t+ | p+ |



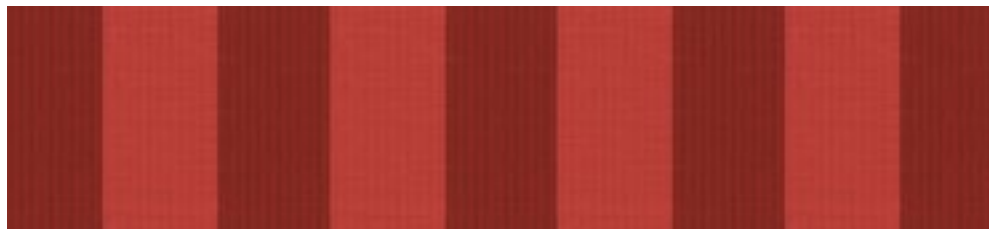
36920 sunsilk

| 1:1 |



36983 sunsilk

| III 24 cm |



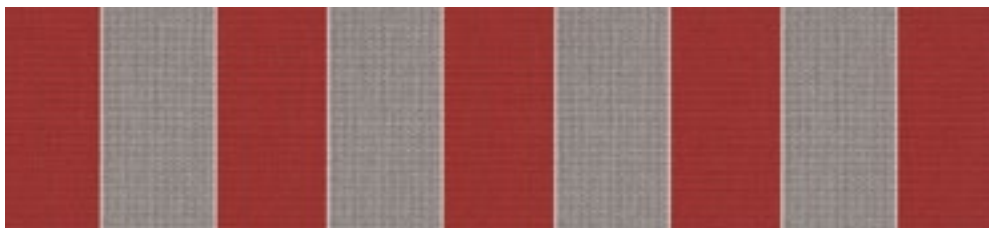
31403 sunvas

| III 30 cm |



30104 sunvas

| III 30 cm |



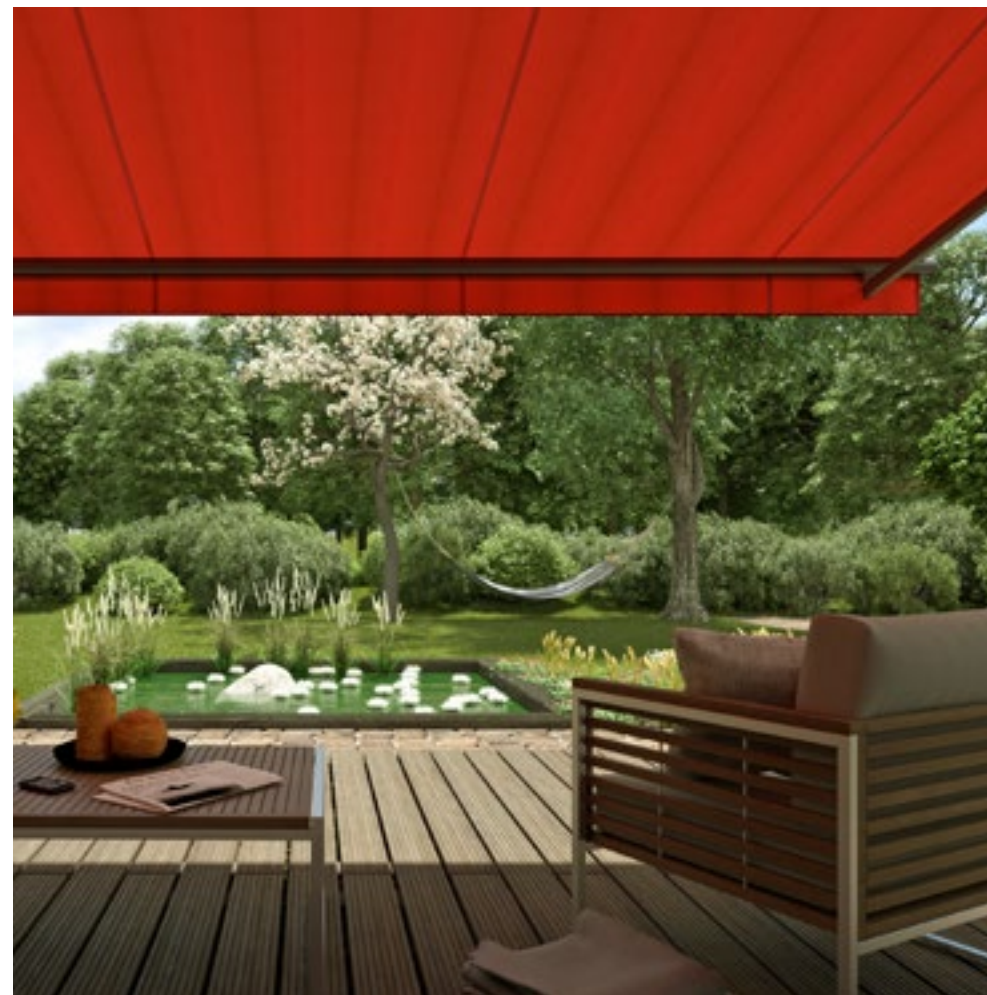
31463 sunvas

| III 30 cm |



31464 sunvas

| III 30 cm |



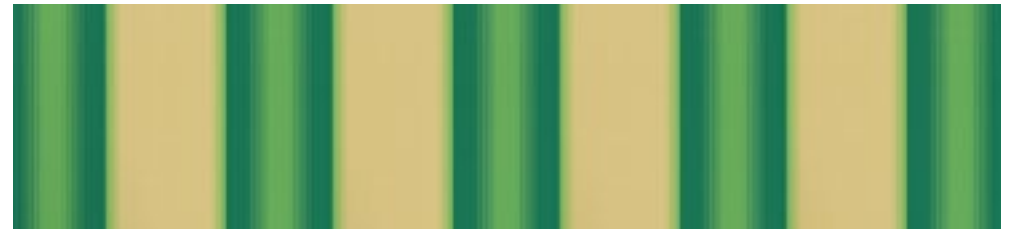
| t+ | This fabric is also available as transolair | p+ | This fabric is also available as perla FR

50 / 4 / *me*



31465 sunvas

| III 30 cm |



36911 sunsilk

| III 30 cm |



31460 sunvas

| III 30 cm |



30106 sunvas

| III 30 cm |



31466 sunvas

| III 30 cm |



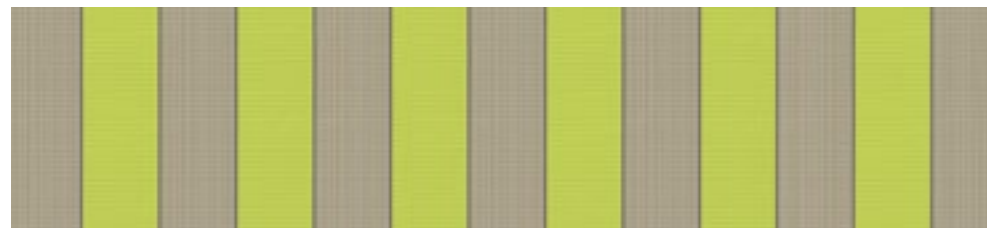
31416 sunvas

| III 40 cm |



31486 sunvas

| 1:1 | t+ | p+ |



36996 sunsilk

| III 20 cm |



31406 sunvas

| III 30 cm |



36901 sunsilk

| III 120 cm | \* |



36916 sunsilk

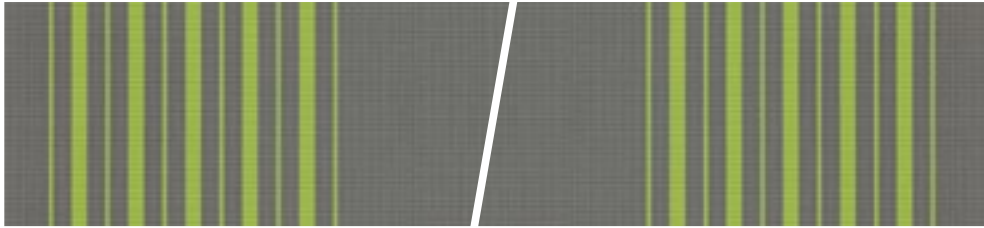
| 1:1 |

| \* | Only for folding-arm awnings/markilux pergola; a symmetrical pattern repeat cannot be guaranteed

| t+ | This fabric is also available as transolair

| p+ | This fabric is also available as perla FR

50 / 4 / *me*



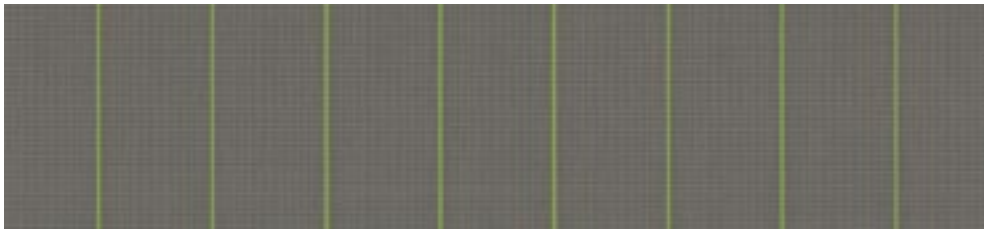
31492 sunvas tango

| III 41 cm |



31420 sunvas

| III 120 cm | \* |



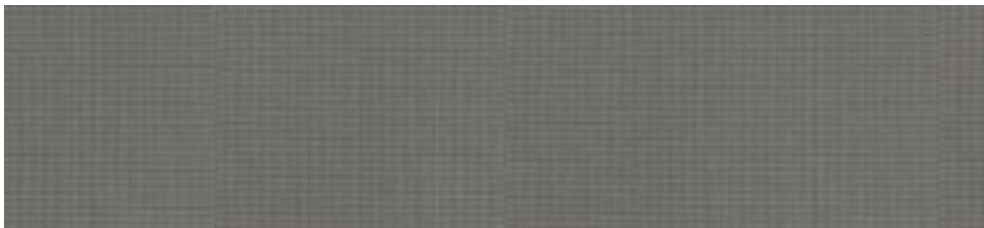
31431 sunvas

| III 15 cm |



31421 sunvas

| 1:1 |



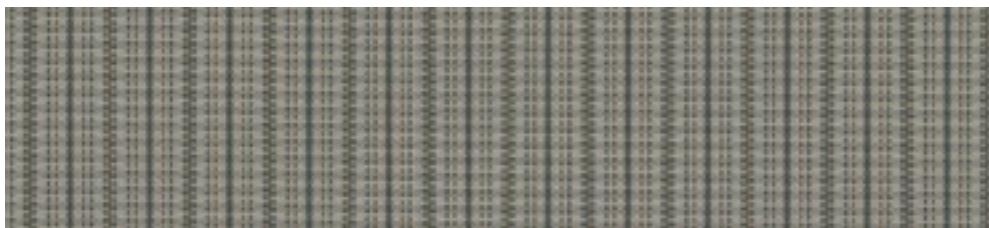
31425 sunvas

| III 8 cm |



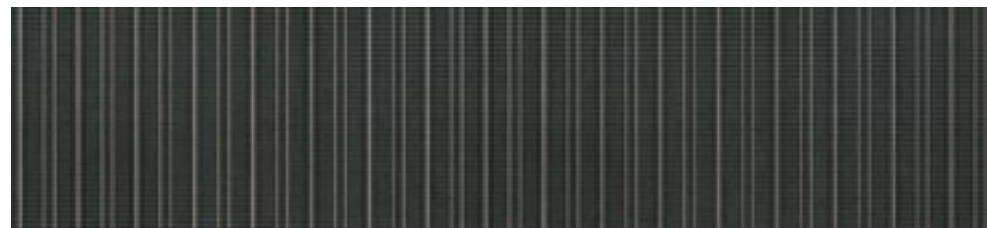
31488 sunvas

| 1:1 |



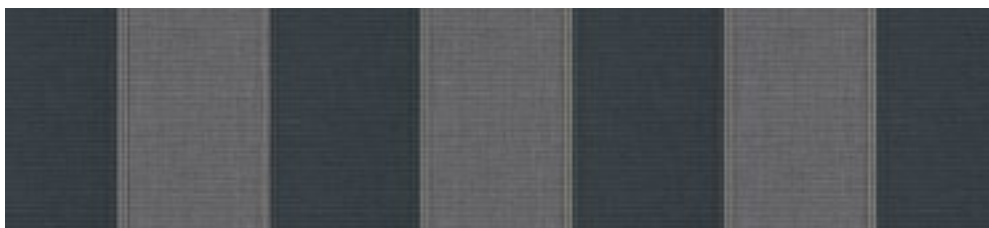
36988 sunsilk

| 1:1 |



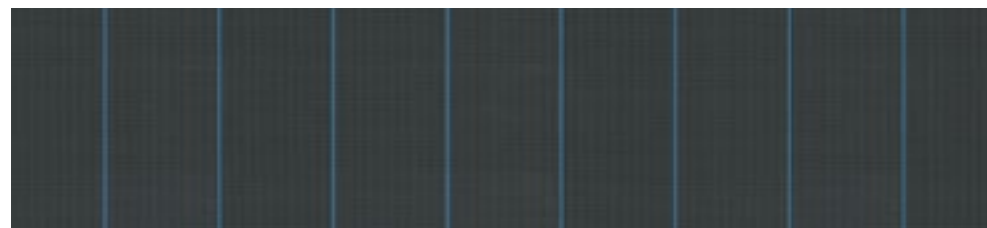
31432 sunvas

| 1:1 |



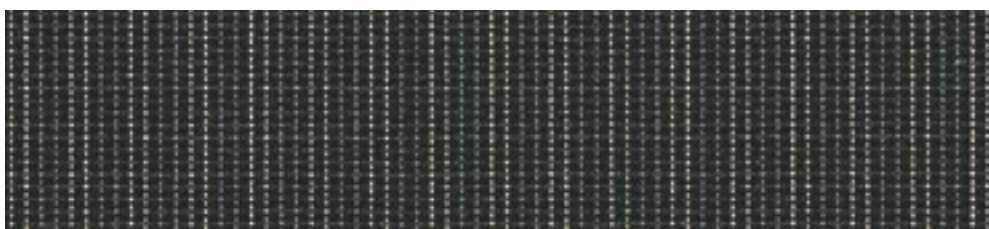
31418 sunvas

| III 40 cm |



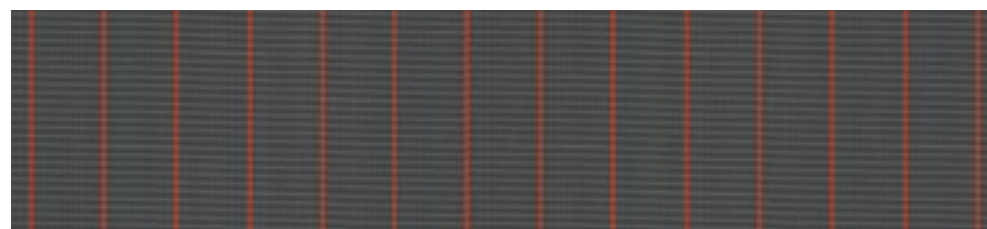
36974 sunsilk

| III 15 cm |



31478 sunvas

| 1:1 |



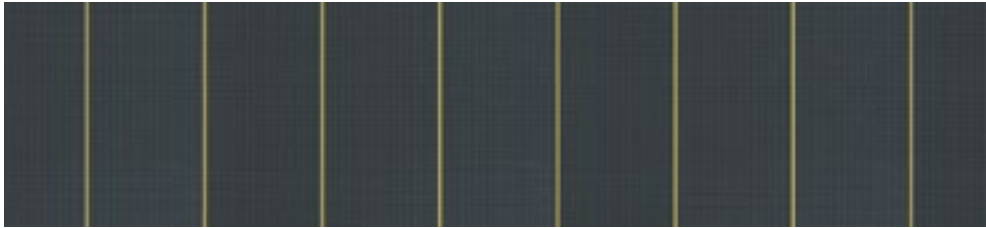
36994 sunsilk

| III 9 cm |

| \* | Only for folding-arm awnings/markilux pergola; a symmetrical pattern repeat cannot be guaranteed



50 / 4 / *me*



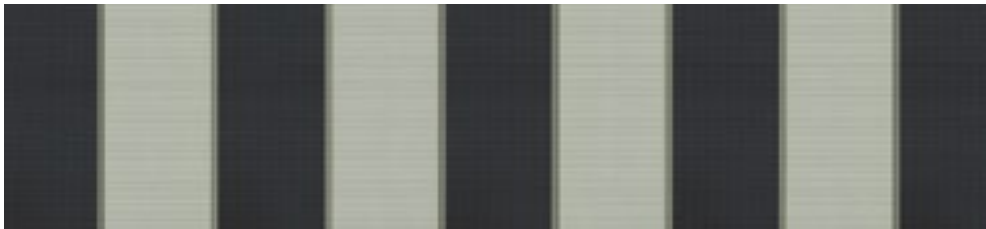
36976 sunsilk

| III 15 cm |



36919 sunsilk

| 1:1 |



36982 sunsilk

| III 30 cm |



31407 sunvas

| III 30 cm |



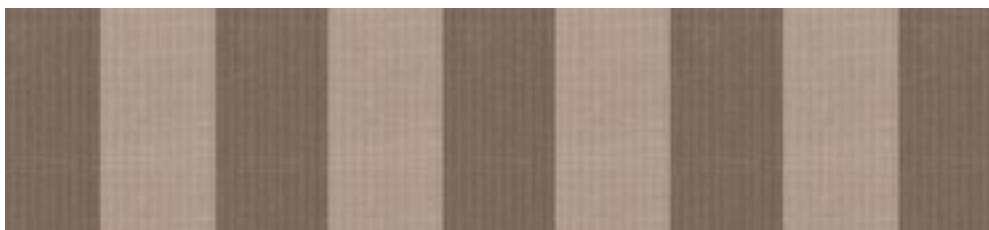
31487 sunvas

| 1:1 | t+ | p+ |



31413 sunvas

| III 40 cm |



31408 sunvas

| III 30 cm |



| t+ | This fabric is also available as transolair    | p+ | This fabric is also available as perla FR



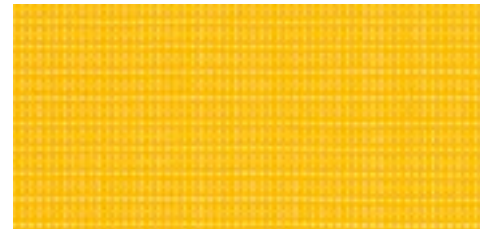
32409 sunsilk

|1:1|



30941 sunvas

|1:1|



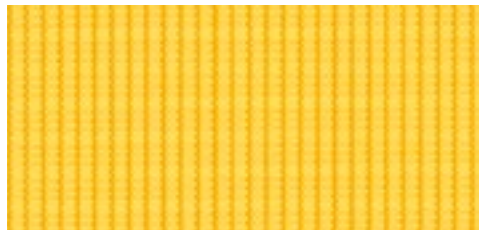
30931 sunvas

|1:1|



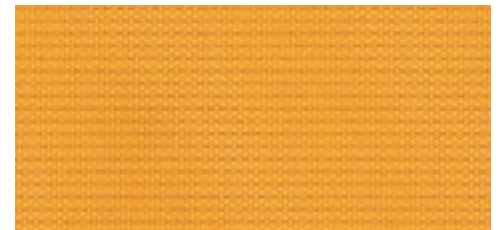
31031 sunvas

|1:1|XL|t+|p+|



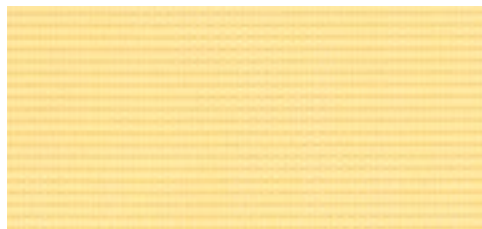
30901 sunvas

|1:1|t+|p+|



32511 sunsilk

|1:1|



32501 sunsilk

|1:1|



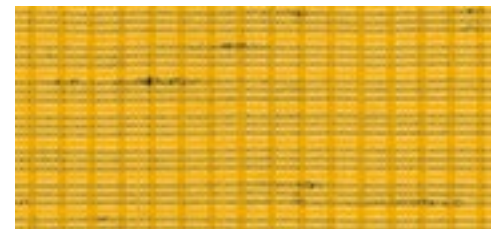
30911 sunvas

|1:1|



31021 sunvas

|1:1|



30921 sunvas

|1:1|

# sunday yellow



31301 sunvas

| III 20 cm |



31240 sunvas

| III 30 cm |



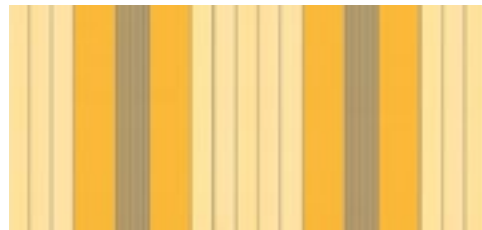
31576 sunvas

| III 15 cm |



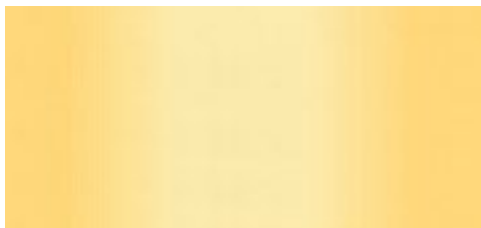
31311 sunvas

| III 20 cm |



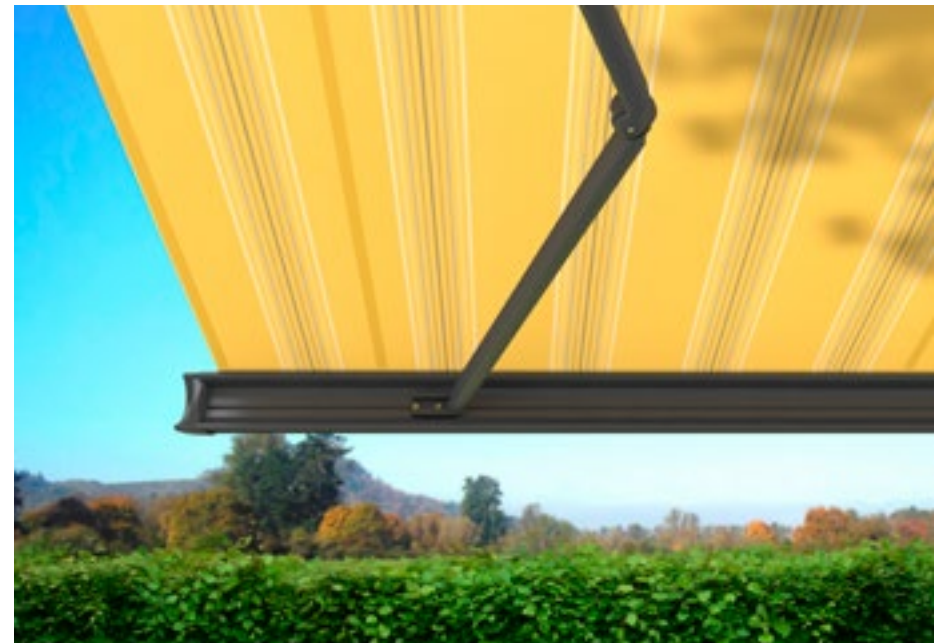
32879 sunsilk

| III 30 cm |



31241 sunvas

| III 60 cm |



| XL | Available as a widely woven fabric for seamless covers up to a drop of 230 cm

| t+ | This fabric is also available as transolair

| p+ | This fabric is also available as perla FR



31574 sunvas

| III 30 cm |



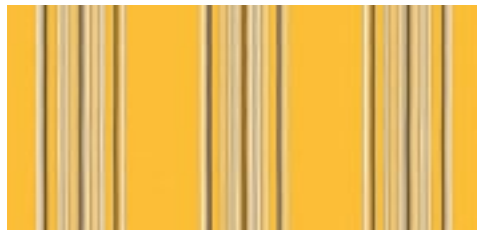
31571 sunvas

| III 30 cm |



32860 sunsilk

| III 30 cm |



32859 sunsilk

| III 24 cm |



31242 sunvas

| III 30 cm |



32861 sunsilk

| III 24 cm |



31231 sunvas

| III 15 cm |



32851 sunsilk

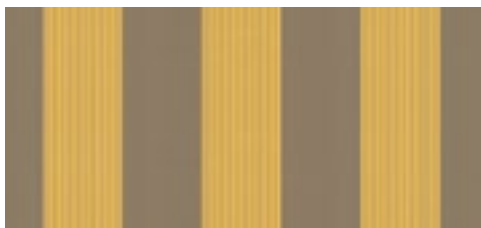
| III 30 cm |



32871 sunsilk

| III 17 cm |

sunday yellow



328 01 sunsilk

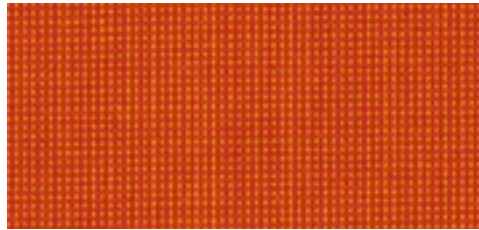
| III 24 cm |





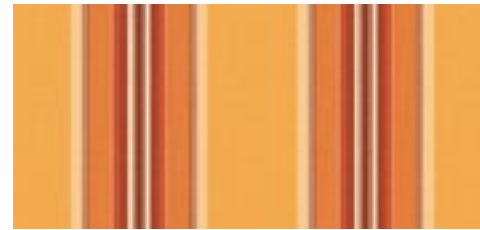
32401 sunsilk

| 1:1 |



30912 sunvas

| 1:1 |



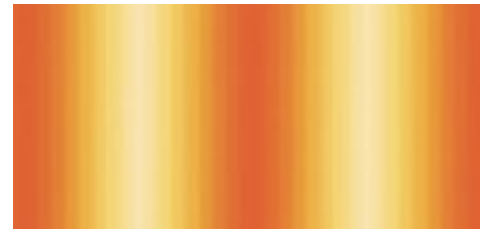
31582 sunvas

| III 30 cm |



31002 sunvas

| 1:1 |



31575 sunvas

| III 30 cm |



32837 sunsilk

| III 17 cm |



31042 sunvas

| 1:1 | t+ | p+ |



31502 sunvas

| III 30 cm |



31221 sunvas

| III 120 cm | \* |

| \* | Only for folding-arm awnings/markilux pergola; a symmetrical pattern repeat cannot be guaranteed

# sunday orange



32802 sunsilk

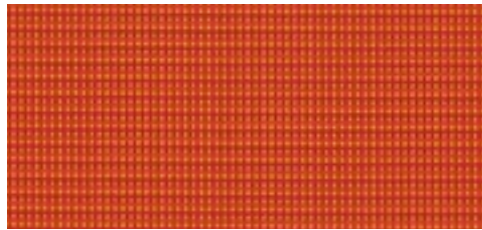
| III 24 cm |



| t+ | This fabric is also available as transolair    | p+ | This fabric is also available as perla FR

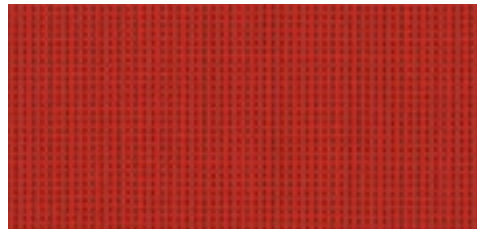


# markilux



32502 sunsilk

| 1:1 |



30903 sunvas

| 1:1 |



31033 sunvas

| 1:1 |



31013 sunvas

| 1:1 | XL | t+ | p+ |



32403 sunsilk

| 1:1 |



32453 sunsilk

| 1:1 |



32473 sunsilk

| 1:1 |



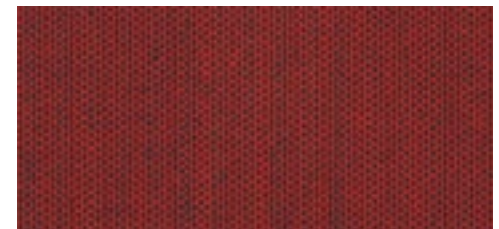
31003 sunvas

| 1:1 |



32433 sunsilk

| 1:1 |



30913 sunvas

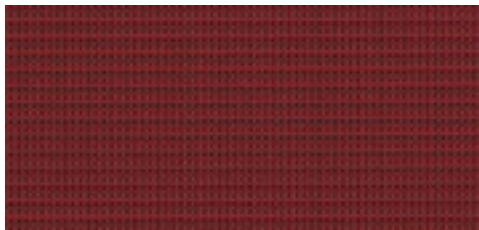
| 1:1 |

# sunday red



309 23 sunvas

| 1:1 |



325 13 sunsilk

| 1:1 |



| XL | Available as a widely woven fabric for seamless covers up to a drop of 230 cm

| t+ | This fabric is also available as transolair

| p+ | This fabric is also available as perla FR

# markilux



31303 sunvas

| III 20 cm |



32849 sunsilk

| III 24 cm |



31204 sunvas

| III 40 cm |



31313 sunvas

| III 20 cm |



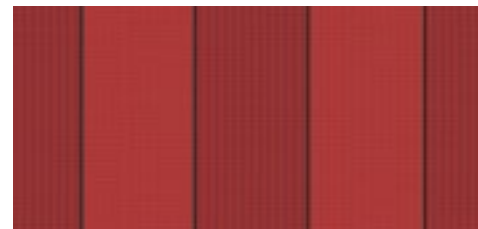
31566 sunvas

| III 30 cm |



32863 sunsilk

| III 24 cm |



32829 sunsilk

| III 30 cm |

# sunday red



32803 sunsilk

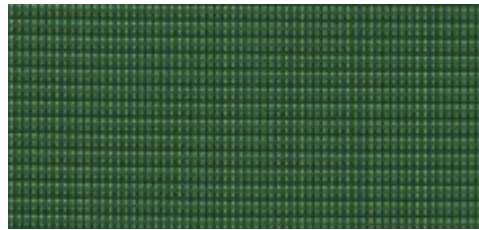
| III 24 cm |





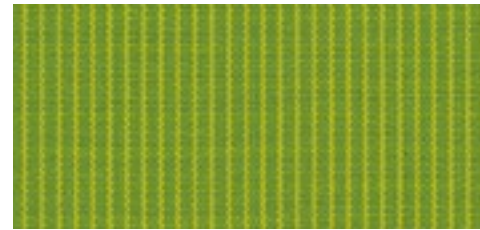
310 36 sunvas

| 1:1 | XL |



325 16 sunsilk

| 1:1 |



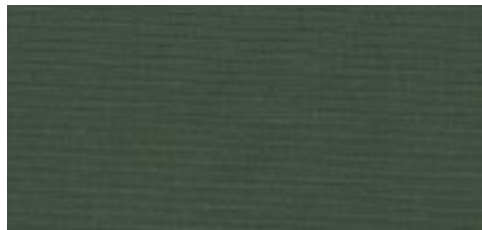
309 06 sunvas

| 1:1 |



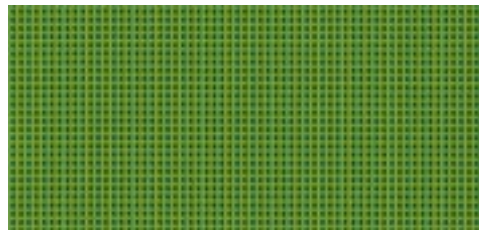
310 16 sunvas

| 1:1 | XL | t+ |



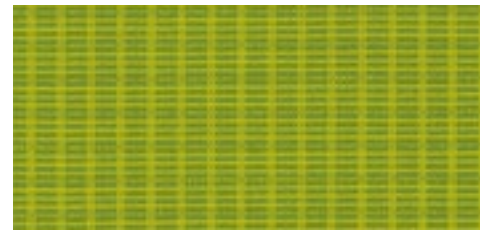
324 76 sunsilk

| 1:1 |



325 06 sunsilk

| 1:1 |



309 26 sunvas

| 1:1 |



310 06 sunvas

| 1:1 |



324 56 sunsilk

| 1:1 |



309 16 sunvas

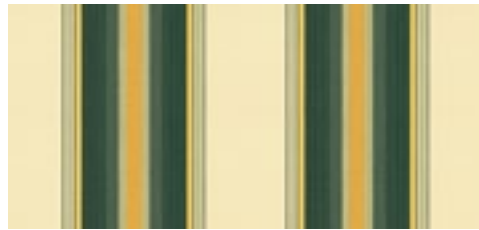
| 1:1 |

# markilux



31306 sunvas

| III 20 cm |



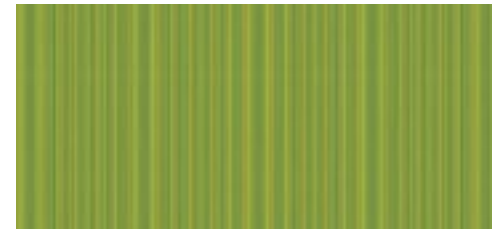
31546 sunvas

| III 30 cm |



31216 sunvas

| III 60 cm |



31236 sunvas

| III 15 cm |



31316 sunvas

| III 20 cm |



31586 sunvas

| III 30 cm |



32836 sunsilk

| III 17 cm |



31590 sunvas

| III 40 cm |

# sunday green



32844 sunsilk

| III 15 cm |





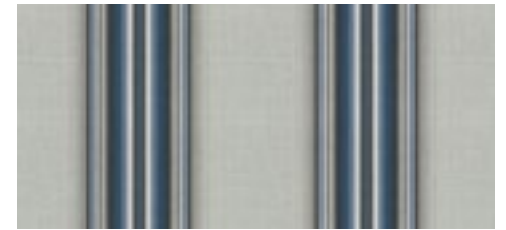
31025 sunvas

| 1:1 | XL |



30915 sunvas

| 1:1 |



31505 sunvas

| III 30 cm |



32475 sunsilk

| 1:1 |



31305 sunvas

| III 20 cm |



31555 sunvas

| III 40 cm |



31035 sunvas

| 1:1 |



30905 sunvas

| 1:1 |



31315 sunvas

| III 20 cm |



32805 sunsilk

| III 24 cm |



# sunday blue



32835 sunsilk

| III 17 cm |



31245 sunvas

| III 30 cm |

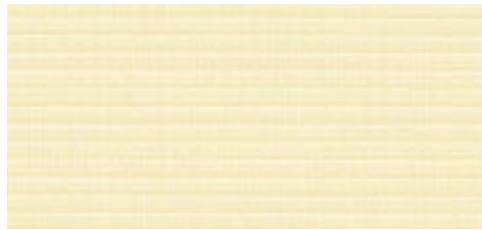


31248 sunvas

| III 30 cm |

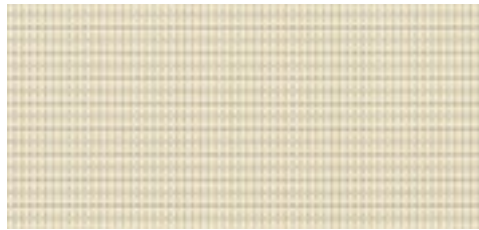


| XL | Available as a widely woven fabric for seamless covers up to a drop of 230 cm



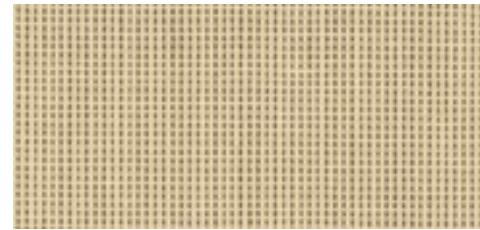
31386 sunvas

|1:1|



32517 sunsilk

|1:1|



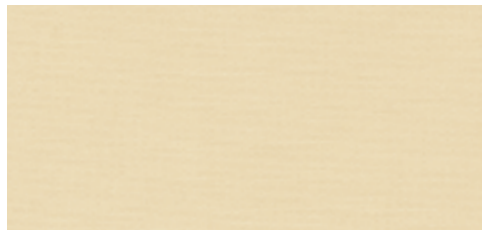
30907 sunvas

|1:1|t+|p+|



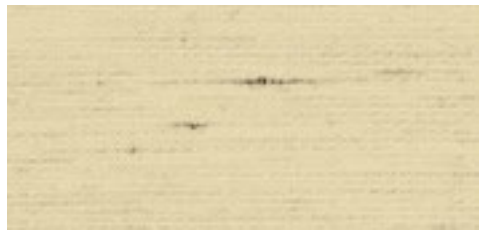
32449 sunsilk

|1:1|



32417 sunsilk

|1:1|



31117 sunvas

|1:1|XL|t+|



31037 sunvas

|1:1|XL|t+|



32437 sunsilk

|1:1|



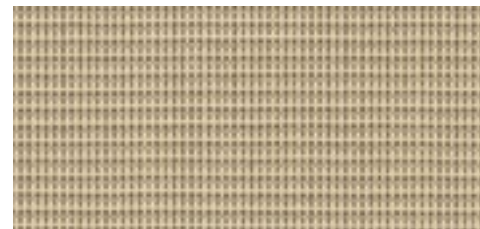
30937 sunvas

|1:1|t+|p+|



31381 sunvas

|1:1|



30917 sunvas

|1:1|



31057 sunvas

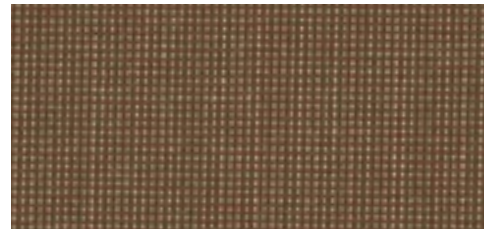
|1:1|XL|t+|

# sunday beige



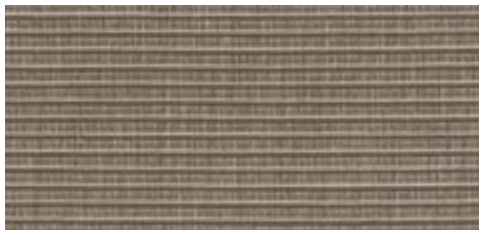
32434 sunsilk

| 1:1 |



30957 sunvas

| 1:1 |



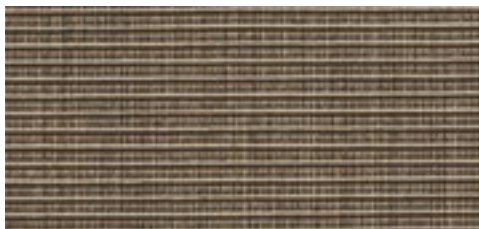
31387 sunvas

| 1:1 | t+ | p+ |



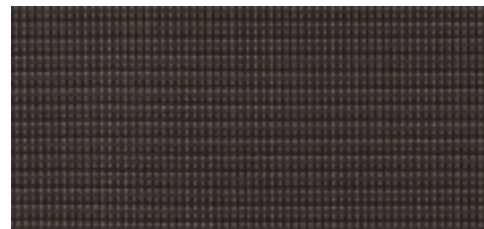
32447 sunsilk

| 1:1 |



31388 sunvas

| 1:1 |



32528 sunsilk

| 1:1 |



| XL | Available as a widely woven fabric for seamless covers up to a drop of 230 cm

| t+ | This fabric is also available as transolair

| p+ | This fabric is also available as perla FR

markilux



31307 sunvas

| III 20 cm |



31317 sunvas

| III 20 cm |



31308 sunvas

| III 20 cm |



32807 sunsilk

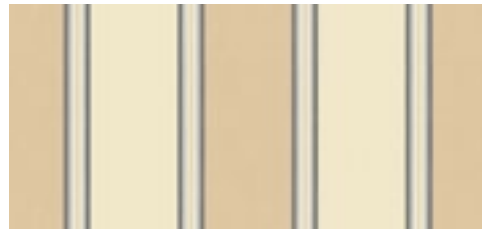
| III 24 cm |

# sunday beige



31207 sunvas

| III 40 cm |



31567 sunvas

| III 30 cm |



31587 sunvas

| III 20 cm |



31569 sunvas

| III 30 cm |



31503 sunvas

| III 30 cm |



31205 sunvas

| III 40 cm |



31514 sunvas

| III 30 cm |



31579 sunvas

| III 20 cm |



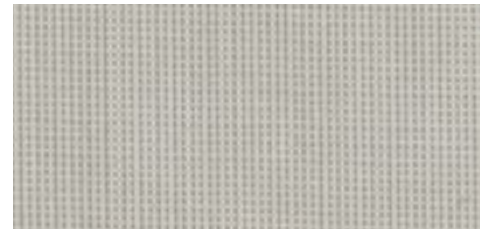
31009 sunvas

| 1:1 | XXL | t+ | p+ |



30927 sunvas

| 1:1 | t+ | p+ |



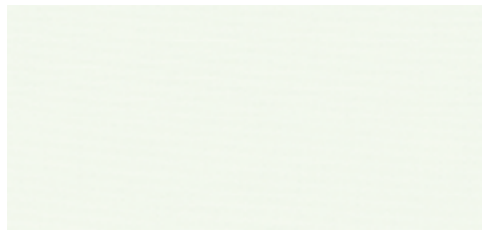
30918 sunvas

| 1:1 | t+ | p+ |



32439 sunsilk

| 1:1 |



32467 sunsilk

| 1:1 |



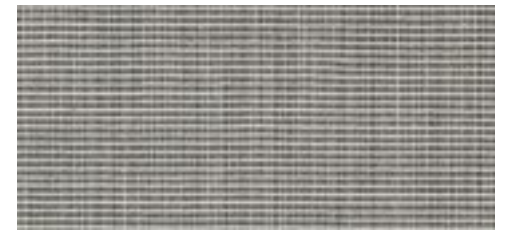
30908 sunvas

| 1:1 | t+ | p+ |



32414 sunsilk

| 1:1 |



31592 sunvas

| 1:1 |



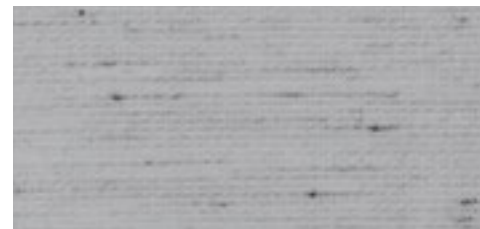
31109 sunvas

| 1:1 | XL | t+ |



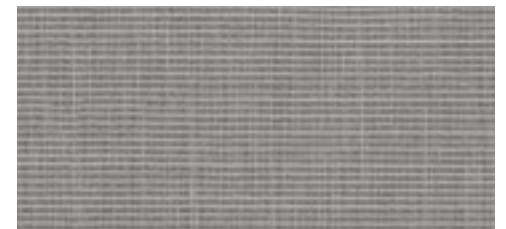
32507 sunsilk

| 1:1 |



31114 sunvas

| 1:1 | XL | t+ |



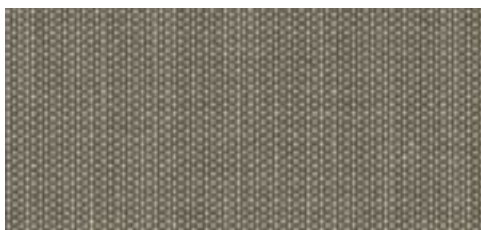
31595 sunvas

| 1:1 | t+ | p+ |

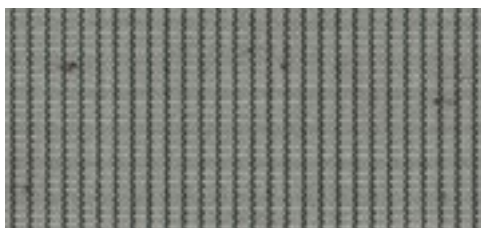
# sunday whiteblack



31008 sunvas | 1:1 | XXL | t+ |



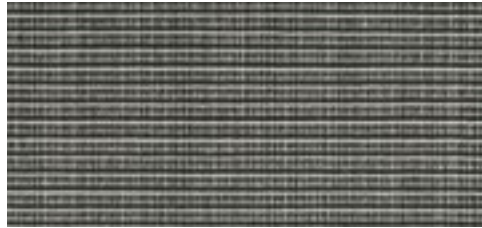
30948 sunvas | 1:1 |



30938 sunvas | 1:1 | t+ |

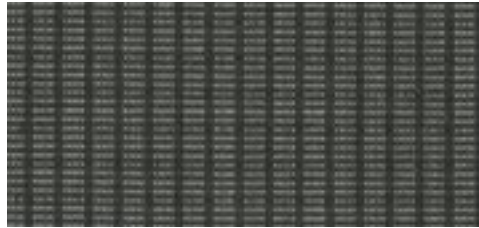


| XL | Available as a widely woven fabric for seamless covers up to a drop of 230 cm, 31008 + 31009 up to a drop of 300 cm | t+ | This fabric is also available as transolair | p+ | This fabric is also available as perla FR



31383 sunvas

|1:1|t+|p+|



30928 sunvas

|1:1|



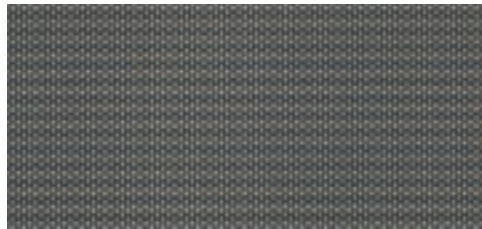
32438 sunsilk

|1:1|



31058 sunvas

|1:1|XL|t+|p+|



32508 sunsilk

|1:1|



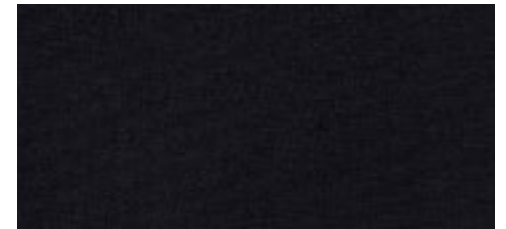
31597 sunvas

|1:1|t+|p+|



30958 sunvas

|1:1|



31028 sunvas

|1:1|XL|t+|p+|



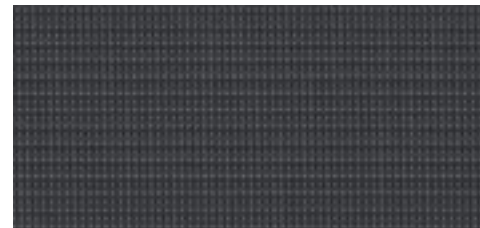
31007 sunvas

|1:1|



31018 sunvas

|1:1|XL|t+|



32518 sunsilk

|1:1|





31318 sunvas | III 20 cm |



31209 sunvas | III 40 cm |



31531 sunvas | III 24 cm |



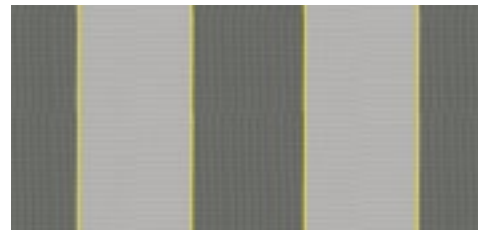
31552 sunvas | III 30 cm |



31328 sunvas | III 20 cm |



31218 sunvas | III 60 cm |



32826 sunsilk | III 30 cm |



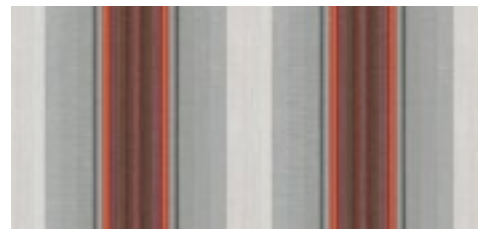
31519 sunvas | III 30 cm |



31309 sunvas | III 20 cm |



31518 sunvas | III 30 cm |



31553 sunvas | III 30 cm |



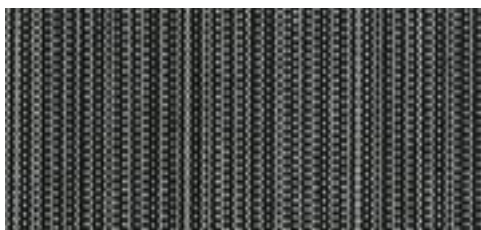
31593 sunvas | 1:1 |

# SUNday whiteblack



31208 sunvas

| III 40 cm |



31594 sunvas

| 1:1 |

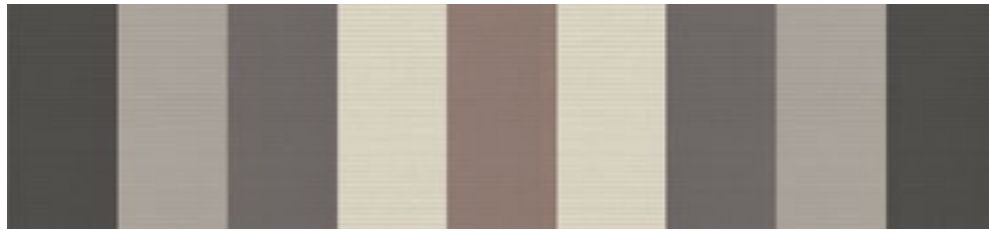


31509 sunvas

| III 30 cm |



# markilux



31220 sunvas

| III 120 cm | \* |



32840 sunsilk

| III 24 cm |



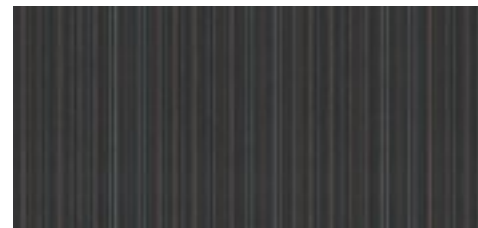
32808 sunsilk

| III 60 cm |



32804 sunsilk

| III 24 cm |

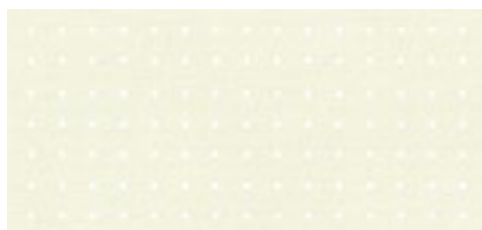


31238 sunvas

| III 15 cm |



| \* | Only for folding-arm awnings/markilux pergola; a symmetrical pattern repeat cannot be guaranteed



33809 transolair | <> 250 cm |



33847 transolair | <> 250 cm |



33837 transolair | <> 250 cm |



33857 transolair | <> 250 cm | □



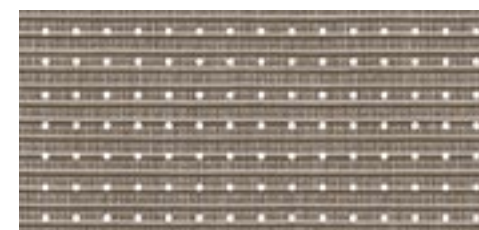
33849 transolair | <> 250 cm |



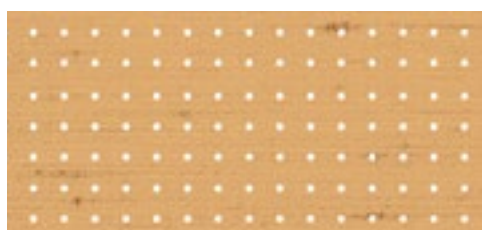
33877 transolair | <> 250 cm |



33950 transolair | <> 120 cm |



33987 transolair | <> 120 cm | □



33937 transolair | <> 120 cm |



33907 transolair | <> 120 cm |

□ Recommended for computer workplaces

<> Covers for the shadeplus are manufactured with a horizontal seam in the case of fabrics 120 cm wide. As a result, fabrics with a textured or flecked pattern will take on a different appearance from that of the awning cover if made from the same fabric.

## specials transolair

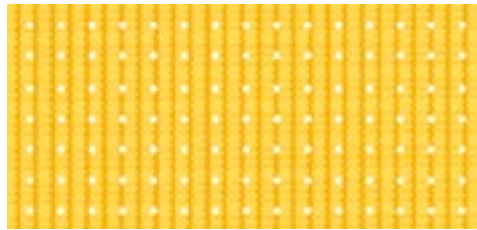


### **Solar protection with a view.**

This sunvas fabric with special perforation technique stands for impressive transparency as well as good light and air permeability. We recommend transolair be used for the markilux shadeplus, side screens as well as vertical roller blinds and glass canopy awnings.

This perforated fabric maintains visual contact with the outdoors and shields against prying eyes at the same time.

It ensures good air circulation between the cover and the glass. This effectively reduces the build-up of a heat cushion between fabric and glass. The creation of water troughs is minimised.



33901 transolair | <> 120 cm |



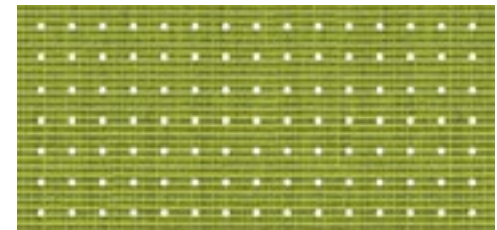
33831 transolair | <> 250 cm |



33842 transolair | <> 250 cm |



33816 transolair | <> 250 cm |



33996 transolair | <> 120 cm | □ |



33813 transolair | <> 250 cm | □ |

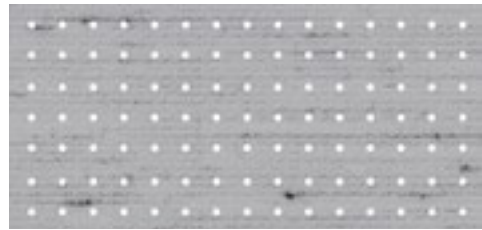


33930 transolair | <> 120 cm | □ |

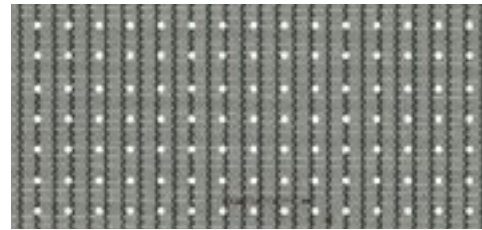
# specials transolair



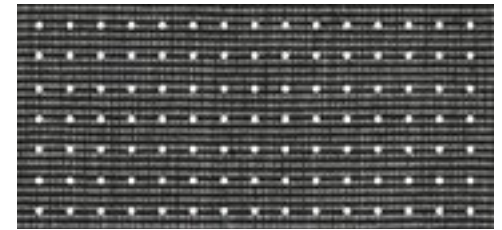
33927 transolair | <> 120 cm |



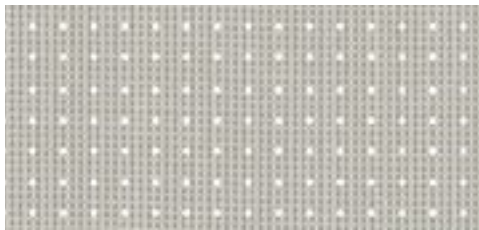
33844 transolair | <> 250 cm | □



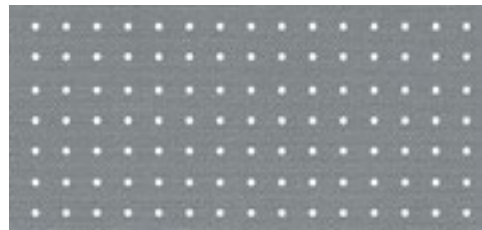
33938 transolair | <> 120 cm | □



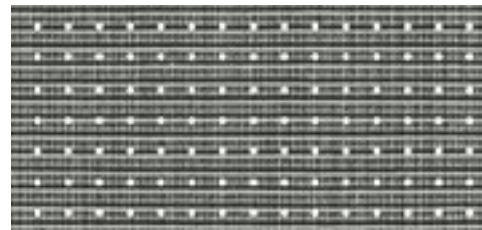
33997 transolair | <> 120 cm | □



33918 transolair | <> 120 cm |



33808 transolair | <> 250 cm | □



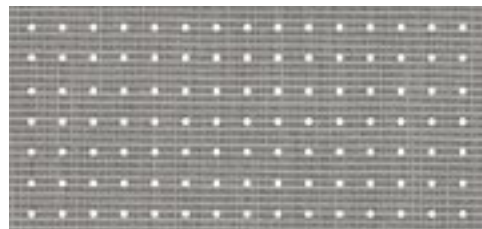
33983 transolair | <> 120 cm |



33858 transolair | <> 250 cm | □



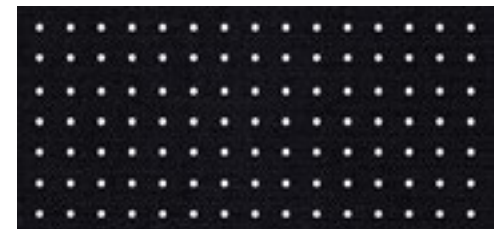
33908 transolair | <> 120 cm |



33995 transolair | <> 120 cm |



33838 transolair | <> 250 cm | □



33828 transolair | <> 250 cm | □

□ Recommended for computer workplaces

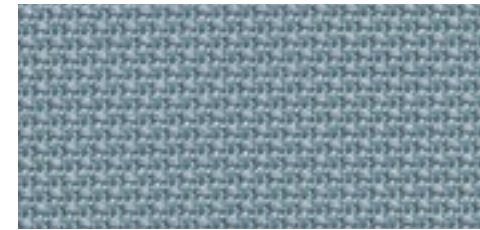
<> Covers for the shadeplus are manufactured with a horizontal seam in the case of fabrics 120 cm wide. As a result, fabrics with a textured or flecked pattern will take on a different appearance from that of the awning cover if made from the same fabric.



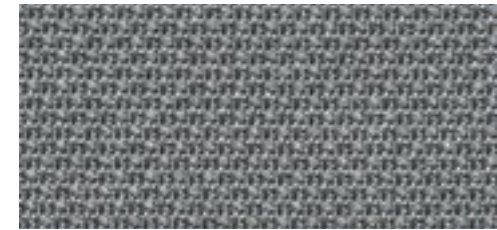
31709 vuscreen ALU



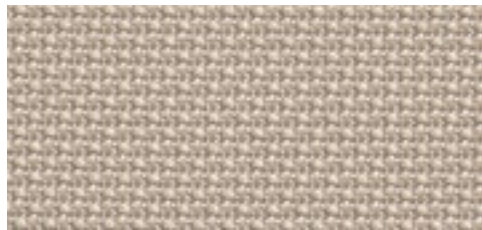
31737 vuscreen ALU



31738 vuscreen ALU



31708 vuscreen ALU



31707 vuscreen ALU



31768 vuscreen ALU



31728 vuscreen ALU



31718 vuscreen ALU



31717 vuscreen ALU



**Solar protection with added functionality**

This slightly transparent fabric with particles of aluminium on the fibres is particularly effective at reflecting the sun's rays. Improves the climate in the room while still offering a good view outside.

vuscreen ALU is state-of-the-art sun and glare protection for markilux vertical roller blinds.

Recommended for computer workplaces



## specials vuscreen ALU





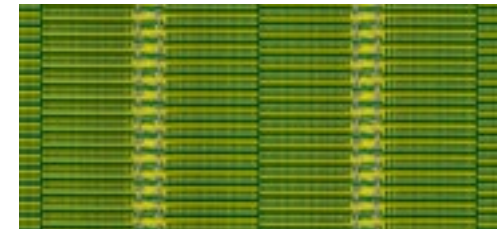
33207 perfortex



33227 perfortex



33101 perfortex



33106 perfortex



33201 perfortex



33208 perfortex



33103 perfortex



33108 perfortex



33217 perfortex



33218 perfortex



**Ideal for conservatories**

Gaps in the warp, woven into the fabric, make the material permeable to both air and water. The risk of the formation of water troughs in rain showers and the build-up of excessive heat between cover and glass is reduced. The aluminium coating\* applied to the series 332.. reduces solar gain as well. The weather fast finish also inhibits the accumulation of dirt and offers excellent water repellency.

\* The top side of the material is impregnated with a higher percentage of aluminium and should face upwards/ outwards to maximise solar reflection. The aluminium in the coating is visible, especially in the case of light cover patterns and under backlit conditions.

## specials perfotex



Recommended for computer workplaces

### Good to know

For technical reasons, the fabric panels of perfotex awning covers for the markilux 8850 are always stitched together. The covers of all other vertical roller blinds and glass canopy awnings are bonded to one another using a state-of-the-art procedure.